



Contents

- Cross Boundary
- Fun Run '09
- Construction
- Trivia
- Spring
- Report Tips
- Medical Corner
- ER vs ED
- Training Opp.
- Recruit Update
- Fire Safety
- EMS Safety
- Tailboard
- Congratulations
- Photos



June 2009

Cross-Boundary Program Kicks Off

The Cross-Boundary program officially kicked off it's 2009 season on June 1. The program, which is in cooperation with the National Forest Service and funded entirely by a grant, allows RLFR to hire seasonal personnel who's primary duties revolve around wildland firefighting. While on-duty, Cross-Boundary personnel assess fire danger to homes in the area, maintain equipment, conduct training, perform fire patrols, and of course, perform wildland fire suppression.

This year, Lieutenant Tyler Rae has taken on a lot of the oversight responsibility for the program. There are four full-time personnel and one part-time personnel working on the program this year. The FT personnel include

Tammy Rice, Andrew Hernandez, Tyler Rae, and Ryan Ples. Will Bernard will be working PT on the program.

This is the program's second year, and it has been a tremendous asset to the region and to the department. The work that the crews accomplish makes for more rapid responses to wildland fires, and helps keep operations running smoothly. With the work on home assessments that has been done, we have been able to inform homeowners of the fire risk to their properties, giving them valuable time to reduce the hazards before a fire threatens them. The assessments also allow our firefighters to have knowledge of properties in the area, so we have a "heads-up" of what we may need to do to save homes.

Fun Run 2009

The grass is green, the days are warm, the kids are at play, which means the Fun Run isn't far away. The planning is already underway for the 2009 Fun Run for Charities, which will be held



on September 5th this year. RLFR will be performing it's traditional duties of traffic control during the event. RLFR Lieutenant Sarah Ewald is one of the Co-Chairpersons for the event. This year, Asst. Chief Kyle Starr is representing the fire division, and EMS Association President Steve Novakovich is representing the EMS division at

all of the pre-event planning meetings.

The Fun Run features 10K and 5K runs, as well as a 2K fun walk. The event is a lot of fun, and is an excellent source of donation funds for local non-profits.

More information will be published here as the Fun Run grows nearer. In the meantime, if you have any questions regarding the event, ask Sarah, Kyle or Steve, or go to the official event website at [www.http://www.rlacf.org/aboutfun.html](http://www.rlacf.org/aboutfun.html)

Construction Update

A quick update on the upstairs construction for those who have not been around much lately.

The paint colors and carpet has been picked, and some of the primer has been applied to the walls. Progress is going well, and we are optimistic that the gym and at least one bedroom will be ready by mid-June. Funding for the project has run out, and we will have to wait for further donations / funding to complete the project.

Trivia

When was the Star of Life designed?

Answer on page 4

Spring Has Sprung

Warm weather has come back to Red Lodge, which means the spring/summer tourists won't be far behind. Our community depends on these tourists for it's livelihood, and we must be prepared to care for the additional residents that the warm months bring to us.

We have recently run our first motorcycle accident call of the season, with many more to come. Many

of the seasonal residents have returned for another beautiful spring and summer in the mountains.

It is vital that everyone does there share to ensure that we are adequately prepared to meet the higher demands of summer, this includes signing up for call shifts, attending trainings to brush up on skills, and signing up for special details / standby's. It's a team effort!

Electronic PCR Tips

Hopefully everyone is getting the hang of the new patient care report software. As we continue to get comfortable with the new system, here are a few reminders to keep in min:

1. For the call number, we use the date and approximate time of the call for the temporary call number, with no special characters. For example, for a call on June 3rd at 1600, the call number would be 0603091600.
2. A narrative is still required on all calls. While much of the data is contained in the body of the report, a narrative is necessary to help "paint the picture" of the call.
3. Keep the laptops plugged into their charger cord when not using them, and leave the inverter switch in the back of the ambulance on so they can charge.
4. NEVER lock the call when it gives you a choice to lock it or not. Kyle or Aaron will lock it after ensuring that all necessary information is in the report.
5. We need SSN's for patients on all transports.
6. Don't forget to get a face sheet and signatures for all transports, and refusal signatures on non-transports.

Don't worry, it takes time to learn new procedures. It will get easier with practice!

E.D. vs E.R.

There is a line from the famous children's book "Charlotte's Web" that says "with the right words, you can change the world". Terminology is important in the emergency services field, and with a recent department name change under our belt, something that we know a little about.

Beartooth hospital has asked us for help. While not a difficult task, it will take time and everyone's help to carry out. The task involves shifting terminology from ER (emergency room) to ED (emergency department).

Just as we changed to Red Lodge Fire Rescue to better represent all the services we provide, BHHC's emergency department is far more than simply a "room". They have been supportive of our terminology change, so let's do the same for them.

Medical Corner - Quik-Clot Dressings

We recently added a new piece of equipment to our medical inventory, a special hemostatic tool called the Quik-Clot Advanced Clotting Sponge from Z-Medica.



The Quik-Clot was invented shortly after 9/11 in response to a request from the USMC for updated equipment in the Marine's individual first aid kit. The Quik-Clot was among several products evaluated, and the only one with a 100% survival rate during testing.

The sponge contains an inert substance known as

Kaolin, which has no known contraindications for use. When the Quik-Clot comes into contact with blood, it quickly draws in the water molecules from the blood, leaving the larger platelet and clotting factor molecules in the wound in a highly concentrated number. This promotes rapid, natural clotting and quickly controls bleeding, even if it is arterial in nature.

They come individually packaged. Simply open the package, pack the sponge into the wound or over the wound, and bandage. Quik-Clot products do not interfere with X-rays, and are easily removed in the hospital setting.

We carry the Quik-Clots sponges in our wildland ALS kit, and are looking at issuing them to personnel working sawyer details as well.

Did you Know? . . .

The U.S. has one the highest fire death rates of all the industrialized nations in the world.

Quote of the Month. . .

"There is no greater calling than to serve your fellow men. There is no greater contribution than to help the weak"

Walter Reuther

May Response Statistics - 22 EMS, 9 Fire Calls

5/5	Medical	BLS	Dehydration	Pt had been on floor for 36-48 hours. Transported to BHHC ED.
5/7	Interfacility	ALS	Abdominal Pain	Pt transported from BHHC ED to Billings Clinic.
5/7	Medical	BLS	Vertigo	Pt with dizziness transported from scene to BHHC ED.
5/9	Medical	BLS	Diabetic Emergency	Pt transported from residence to BHHC ED.
5/9	Medical	BLS	Fever	Pt transported from scene to BHHC ED.
5/13	Medical	BLS	Altered Mental Status	Pt transported from scene to BHHC ED.
5/13	Interfacility	ALS	Altered Mental Status	Pt transported from BHHC ED to St. Vincent's.
5/15	Interfacility	ALS	OB Emergency	Pt in labor transported from BHHC ED to Billings Clinic.
5/18	Interfacility	BLS	Medical	Pt with liver failure transported from BHHC to Billings Clinic.
5/22	Interfacility	ALS	Cardiac	Pt with cardiac arrhythmia transported from BHHC to Billings Clinic.
5/22	Medical	BLS	Diabetic Emergency	Pt treated on scene, refused transport.
5/22	Medical	BLS	Intoxicated Patient	Assessed a patient in custody by GCSO. Pt was not transported.
5/23	Interfacility	ALS	Trauma	Pt transported from BHHC to Billings Clinic.
5/23	Interfacility	BLS	Medical	Pt with jaundice transported from Billings Clinic to BHHC.
5/23	Trauma	BLS	Assist BHHC	Called to assist BHHC staff with a trauma patient at the ED.
5/23	Trauma	BLS	Assist BHHC	Called to assist BHHC with a pediatric trauma patient at the ED.
5/23	Trauma	ALS	Ski Accident	Pt transported off of Beartooth Pass to BHHC ED.
5/26	Interfacility	ALS	Cardiac	Pt with chest pain transported from BHHC ED to Billings Clinic.
5/30	MVC	BLS	Motorcycle Accident	Cancelled enroute. No transport, pt taken via private vehicle.
5/30	MVC	BLS	Motorcycle Accident	Cancelled enroute. No transport, pt taken via private vehicle.
5/30	Interfacility	ALS	Trauma	Pt from motorcycle accident transported from BHHC to Billings Clinic.
5/31	Interfacility	ALS	Abdominal Pain	Pt transported from BHHC ED to St. Vincent's.

May Fire Responses

5/1	City	Gas Smell	Investigate gas smell. No hazards found.
5/4	City	CO Alarm	Carbon monoxide alarm. No hazards found.
5/14	City	Gas Smell	Investigated. No hazards found.
5/21	Rural	Fire Alarm	False alarm, no hazards found.
5/22	Rural	Fire Alarm	False alarm, cancelled before arrival on scene.
5/23	City	Smoke Odor	Investigated. Equipment problem found. No damage
5/23	City	Power Pole Fire	Controlled access, stood by for power company.
5/25	Rural	MVC	Vehicle accident. Provided traffic control.
5/30	Rural	MVC	Motorcycle accident. Cancelled while enroute.

2009 Totals (As of June 1)

Total EMS responses:	184
Interfacility transports:	62
911 emergency calls & other:	122
Total fire responses:	38
Structure Fires:	5
Vehicle Fires:	1
Wildland Fires:	0
EMS Assist:	2
Rescue / MVC:	10
Hazardous Situation:	15
Service or Other:	0
Good Intent / False Call	5

Training Opportunity

There are still openings this summer in the Montana D.R.I.V.E. program. The program, which stands for Driver-In-Vehicle-Education is a full-day course that covers driver skills such as evasive steering, skid control, cornering, off-road recovery and more.

The program has vehicles such as fire apparatus, ambulances, DOT trucks, and more to ensure that students have the opportunity to practice in vehicles similar to ones they work with in their jobs.

Slots fill up quickly, so it is important to sign up quickly if interested. The department will provide transportation, lodging and per diem for meals.

For more information, or to register online, go to <http://www.opi.state.mt.us/DRIVE/ADEP.html>. We would like to send 4 people per trip for maximum efficiency if possible.

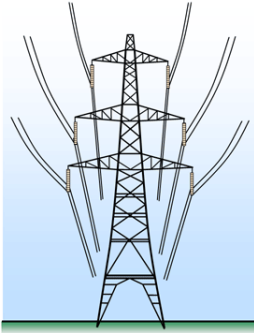
Fire Recruit Academy Update

The 2009 fire recruit academy wraps up on June 10th with the FGO (fire ground operations) exercise. The exercise brings together all of the skills and information that the recruits have been taught over the past months.



As the recruit class wraps up, we would like to thank all of the instructors who have contributed many hours of their free time to help teach our newest members. It is your experience and instruction that will help our recruits be the best firefighters they can be.

Fire Safety - Power Lines in the Wildland Setting



Power transmission lines may not come to mind as a common hazard encountered in wildland fires, but they can be just as deadly as power lines in the structural firefighting arena.

Some tips to remember when power lines or boxes are located on or near a wildland fire scene:

- If possible, have the power company cut power to lines near the fire line.
- Don't operate heavy equipment under power lines.
- Don't use power line right-of-ways as cargo storage areas.
- Beware of vehicle antenna height when driving under power lines.
- Use extra caution around power lines during retardant drops near them.
- Don't park under power lines. The electromagnetic field

around the lines can energize ungrounded vehicles or equipment and cause a shock to anyone who touches them.

- Never apply a straight stream to a power line.
- Smoke contains carbon, which can conduct electricity. Smoke can conduct electricity from the line to the ground in a matter resembling lightning.
- If a power line falls on your vehicle, DO NOT EXIT until the power company arrives and advises it is safe to do so.
- If you are in a vehicle in contact with a downed power line and must exit (vehicle is on fire, etc), jump clear, keep both feet together, and bunny hop away.



EMS Safety - Response to a Meth Lab

While fortunately not a common occurrence in our area, there is always a chance of being called to a location for a medical call where meth or other illegal substances are being manufactured. EMS providers are not equipped or trained to mitigate the hazards of a meth lab, so here are some things to keep in mind should you ever find yourself in this situation.

1. Make a quick mental note of what you see so

you can inform other responders on their arrival.

2. Get out of building as soon as possible and get to a safe location, upwind of the lab.
3. Do not touch anything! Many highly toxic and unstable chemicals are used in the process of making meth.
4. Exit the same way you entered. Many meth labs have booby traps.
5. Notify law enforcement. It is likely a full fire response will be required as well.
6. Do not endanger yourself. EMS is not equipped to enter a toxic location such as a meth lab. Even entering to drag a patient outside is putting yourself and your crew in grave danger. Don't risk it.

Upcoming Dates

6/1	Fire association meeting	1900-2200
6/8	Annual Fire Line Refresher	1800-2100
6/10	Recruit Academy—FGO Final	1900-2200
6/15	Fire Training—Wildland	1900-2200
6/17	EMS Training—Standby's	1900-2200
6/22	Fire Officer Training—TBA	1900-2200
6/24	EMS Association Meeting	1900-2000
6/24	EMS Training—Dr. Fouts	2000-2200
6/29	Fire Officer Meeting	1900-2200

It may be hard to leave a patient, but crew safety is priority 1, and entering a meth lab without proper PPE, even for a minute or two, can have life-ending or life-long consequences.

Congratulations!

Congratulations to Red Lodge Fire Rescue EMT Jeremy Hauge and his new wife, Taylor, on their marriage June 6th. Jeremy is the son of RLFR Captain Lee Hauge, and brother to RLFR EMT Brad Hauge.

Trivia Answer

1973. The Star of Life was designed by Leo Schwartz, the EMS Branch Chief of the NHTSA, after the Red Cross complained that the orange crosses being used on ambulances looked too much like the Red Cross Logo.

Tailboard

- Due to budgetary constraints, we will not be purchasing a new ambulance this next fiscal year.
- Attention EMS division, now that the weather has warmed (a little at least), we will begin having a meal before meetings and trainings. Come hungry!
- If you have not done a pack test yet and need to, let Aaron know ASAP. The wildland season is here, and we need every able person at the ready.

RLFR Photos



Red Lodge firefighters attend a wildland fire refresher class in Laurel this spring. RLFR sent Engine 79 and the mobile command post to the training, along with Aaron McDowell, Tim Ryan, Ryan Ples and Dan Johnson.

Humor



A response delay in Yellowstone NP.

Guest columnists needed! Let Kyle know if you would like to submit an article.

Safety



HMMM, what is wrong with this photo? The line isn't charged yet, and his PPE is lacking, just for starters. Fortunately this is not from our department. A good example of how not to do things.

Red Lodge Fire Rescue

P.O. Box 318
Red Lodge, MT 59068
(406) 446-2320

Email: info@redlodgefire.com

A publication of Red Lodge Fire Rescue

www.redlodgefire.com

The All-Call



Red Lodge
FIRE
R E S C U E

Official Department Newsletter

Red Lodge Fire Rescue
P.O. Box 318
Red Lodge, MT 59068

Postage

